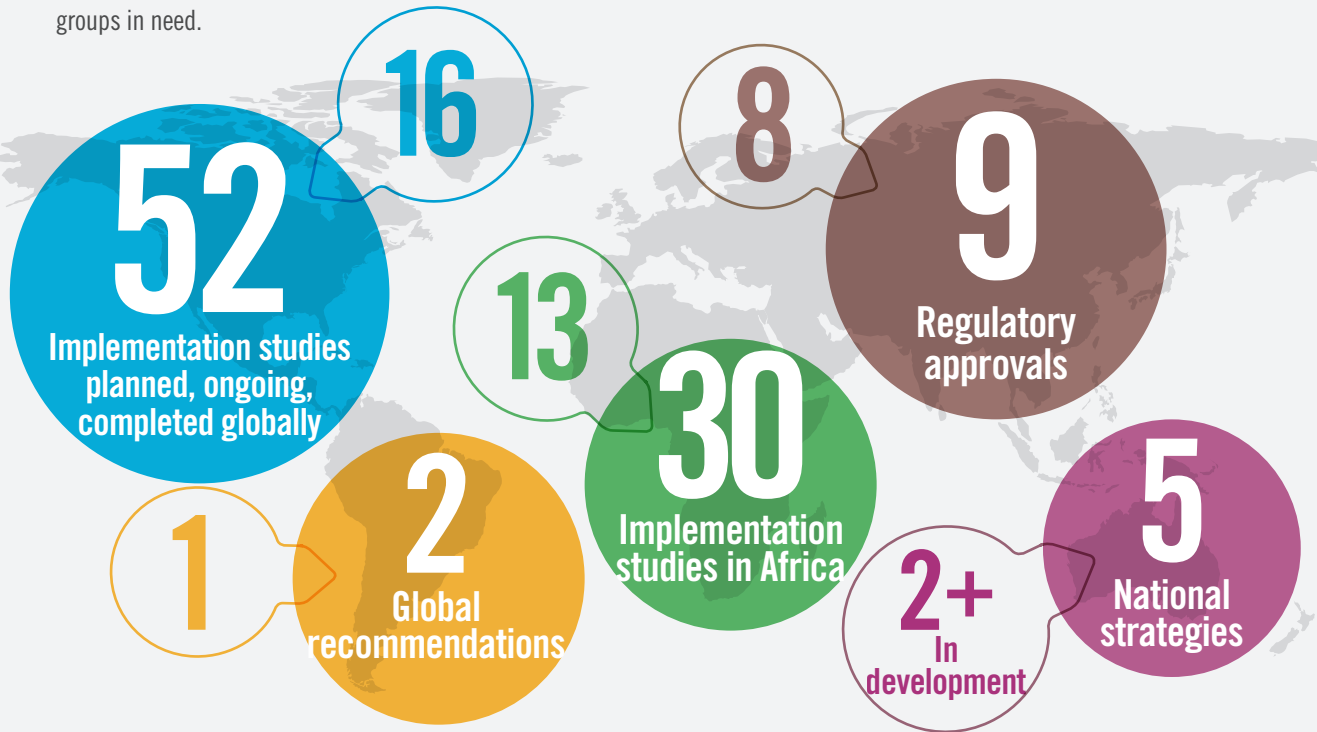


Picking up the Pace: A global look at PrEP introduction

The numbers in the large circles represent global totals, many of which took years to achieve, while the smaller circles represent changes in just a nine-month span (Oct. '15 – Jun. '16). In sub-Saharan Africa, many of the implementation studies are in female sex workers—leaving gaps in research on men who have sex with men, adolescent girls and young women, and other groups in need.



For the latest version please visit www.avac.org/infographic/prep-pace.