

Its Not Just About the Trial:

GPP from discovery to delivery in TB Research.

Masingita Lambane

Head of Strategic Partnerships and Community Systems



THINK

Introducing THINK



Non-Profit NGO:

THINK South Africa

- Founded 2012
- Head Office Durban

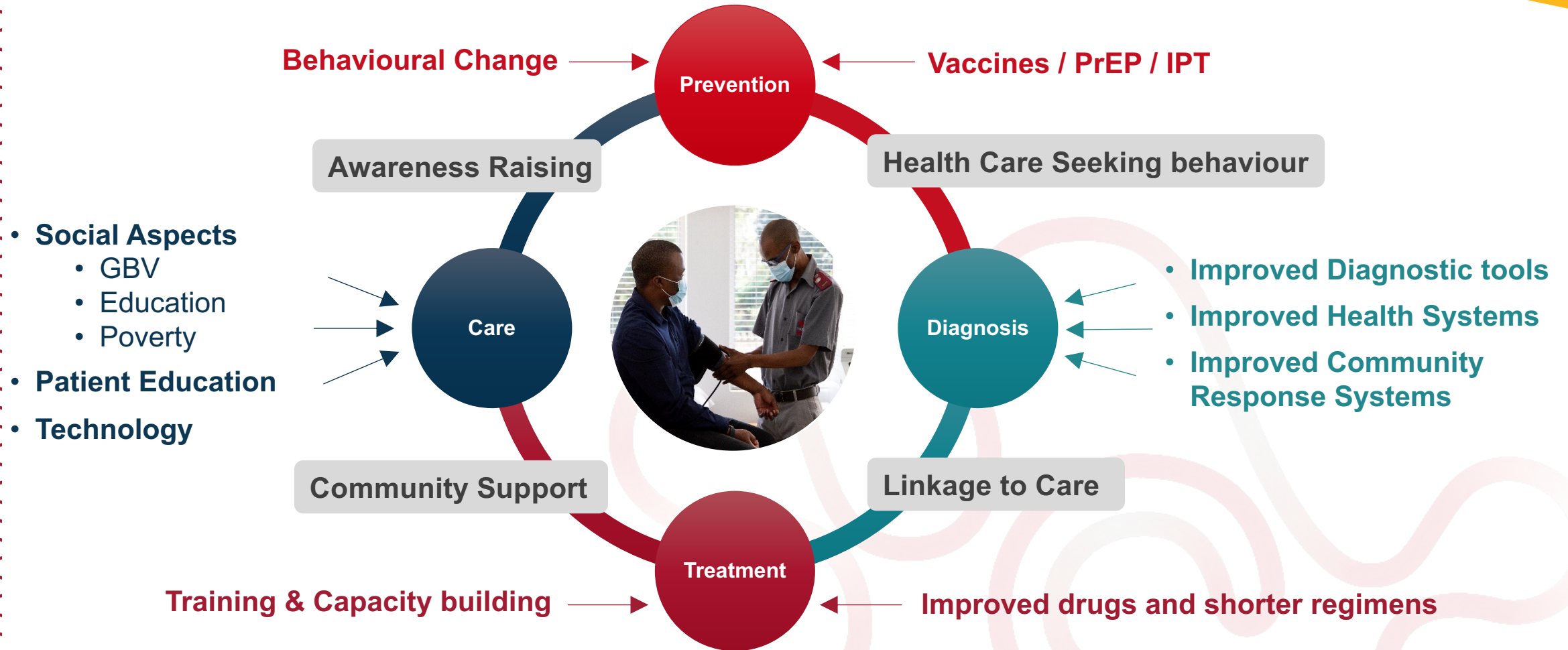
Purpose:

To Make a Difference in the lives of those affected by TB and HIV



Research and Public Health Interventions

to impact TB and HIV



Our GPP Journey



Definition



A SET OF
GUIDELINES AND
PRINCIPLES



TO ENSURE
MEANINGFUL AND
ETHICAL INVOLVEMENT
OF STAKEHOLDERS IN
COMMUNITIES AND FOR
PARTICIPANTS AND
RESEARCHERS



FACILITATES **RESEARCH**
AND **POLICY-MAKING**
PROCESSES.



ORIGINALLY DEVELOPED
FOR **BIOMEDICAL HIV**
PREVENTION TRIALS



FOSTERS **COLLABORATION**,
RESPECT, AND
TRANSPARENCY BETWEEN
RESEARCHERS AND THE
COMMUNITIES INVOLVED.

How we see GPP –

Get Involved

- Collaborate
- Engage
- Interact

- *People,*
- *Structures,*
- *Bodies,*
- *Regulators,*
- *Enforcers*

Assess

- Genuine,
- Optimistic,
- Original,
- Progressive

?

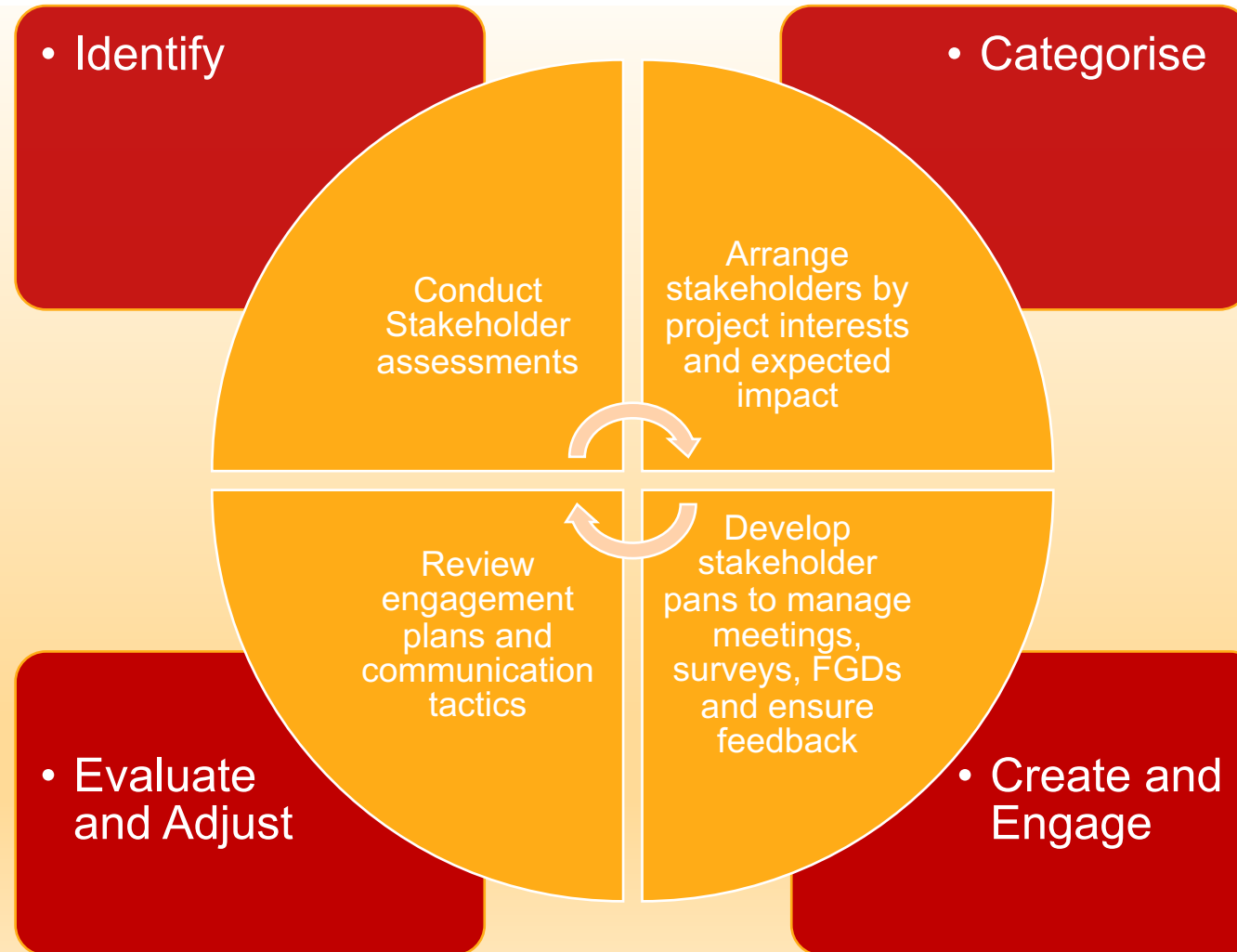
- *Systems,*
- *Processes,*
- *Terms,*
- *Guidelines*

- Norms,
- Values,
- Cultures

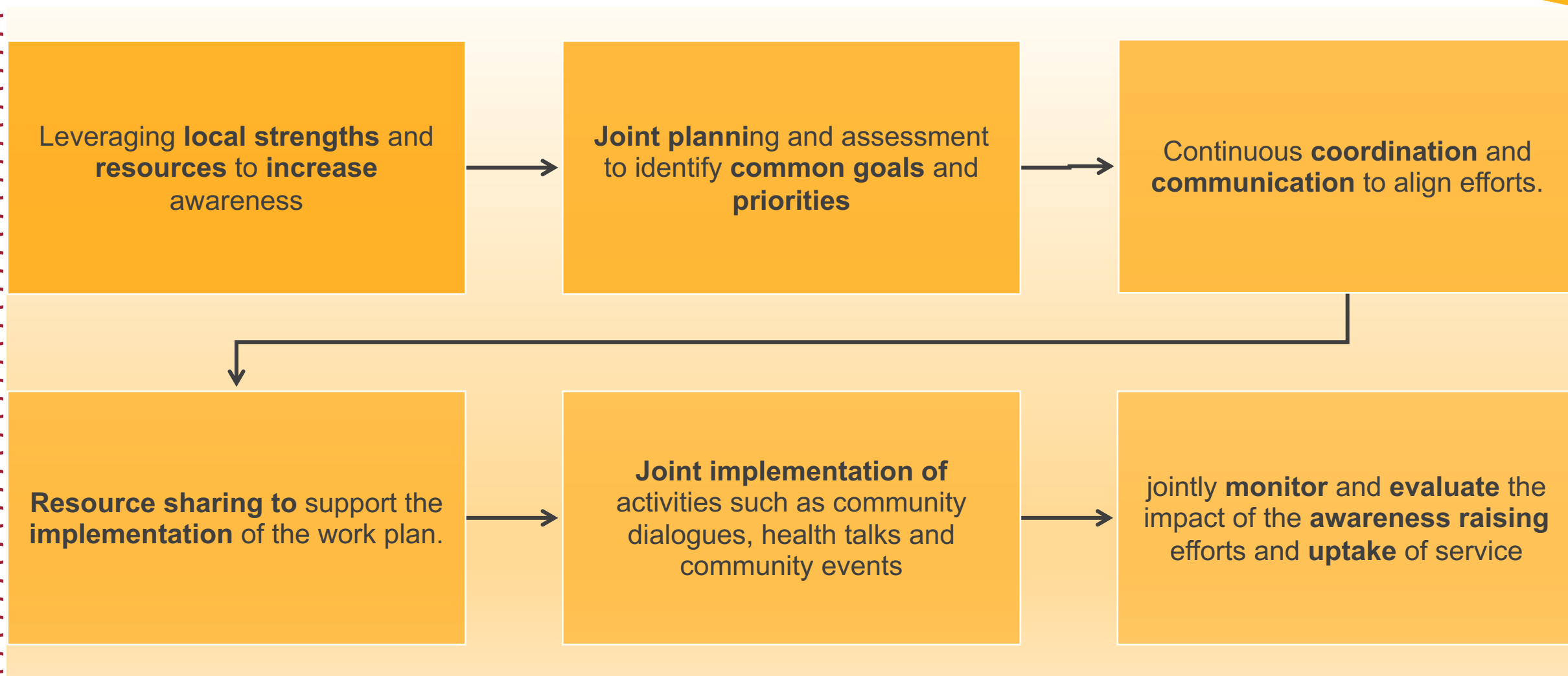
Drive Change

Method
Approach
Routine
Exercise

Stakeholder Engagement Framework



Ensuring Community Participation



Our Approach

Pre-Study

- Create awareness in the community about research trials
- Hold community meetings, public seminars, and door-to-door visits
- Prepare terms of reference for setting up a CAB
- Discuss study aims, purpose, and benefits
- Establish community advisory group
- Adopt the constitution
- Facilitate a GPP training (for the CAB)
- Recruit of participants (multi-study)



Post-study

- Prepare and translated dissemination material
- Attend dissemination workshops
- Conduct dissemination workshops, meetings and discussions



GPP Driven Journey

Our Community-led approaches contribute to improving **TB diagnosis** and **treatment** in various environments.



Lessons Learned

- Community-led interventions enable members to **plan and execute initiatives**.
- It's essential to identify community needs and to develop **culturally appropriate** and **sustainable solutions**.
- Community members can help **monitor and evaluate** these initiatives when properly **trained and equipped**
- **Faith and openness** are crucial for community engagement,
- Community Engagement plans requires clear goals, methods, results.
- **Empowered** community members with the necessary tools, skills, and expertise to manage interventions **better**.
- **When you strengthen community members skills**, you empower them members to participate in decisions and interventions



Conclusion

- Our approach demonstrated the importance of **community engagement** in conducting **effective** and **impactful** projects.



THANK YOU



THINK