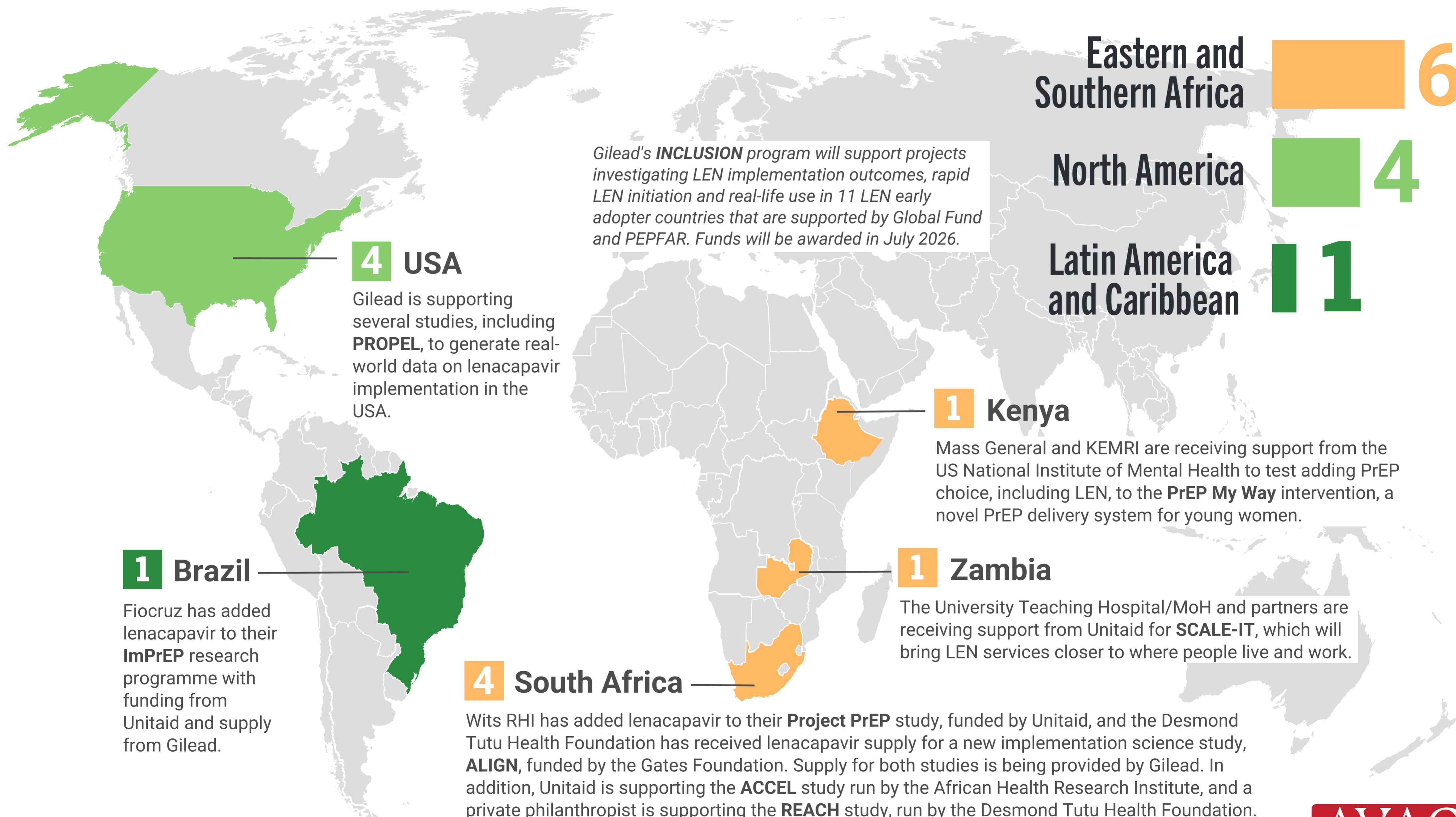


11 Implementation studies ongoing for LEN in 5 countries as of April 2026



Gilead's **INCLUSION** program will support projects investigating LEN implementation outcomes, rapid LEN initiation and real-life use in 11 LEN early adopter countries that are supported by Global Fund and PEPFAR. Funds will be awarded in July 2026.

4 USA
Gilead is supporting several studies, including **PROPEL**, to generate real-world data on lenacapavir implementation in the USA.

1 Brazil
Fiocruz has added lenacapavir to their **ImPrEP** research programme with funding from Unitaaid and supply from Gilead.

4 South Africa
Wits RHI has added lenacapavir to their **Project PrEP** study, funded by Unitaaid, and the Desmond Tutu Health Foundation has received lenacapavir supply for a new implementation science study, **ALIGN**, funded by the Gates Foundation. Supply for both studies is being provided by Gilead. In addition, Unitaaid is supporting the **ACCEL** study run by the African Health Research Institute, and a private philanthropist is supporting the **REACH** study, run by the Desmond Tutu Health Foundation.

1 Kenya
Mass General and KEMRI are receiving support from the US National Institute of Mental Health to test adding PrEP choice, including LEN, to the **PrEP My Way** intervention, a novel PrEP delivery system for young women.

1 Zambia
The University Teaching Hospital/MoH and partners are receiving support from Unitaaid for **SCALE-IT**, which will bring LEN services closer to where people live and work.

For more details, visit the integrated study dashboard at www.prepwatch.org/studies

